

# Trough feeders ZP

## FEEDING



Trough feeder ZP 1000x5000



Feeding of quarry stone by the trough feeder ZP 1000x5000



Trough feeder ZP 1000x5000

Trough feeders are used for feeding lumpy and grained materials. They are used in material treatment plants for feeding from primary

hoppers to coarse screens or crushers. They are the bottom of inlet hoppers.

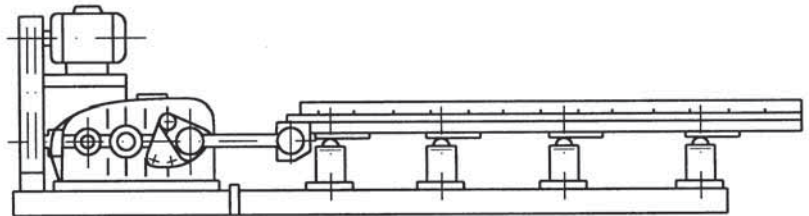
### The exceptional operating properties of trough feeders ZP are:

- High operating reliability
- Low cost for operating and maintenance
- High capacity
- Easy exchange of spare parts
- Simple attendance and maintenance

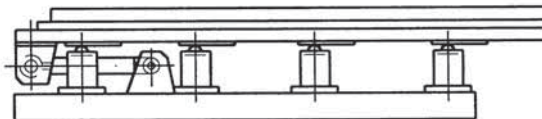
### Basic characteristics of trough feeders

- The amount supplied can be regulated in steps by changing the lift or it can be continuously regulated by a frequency converter.
- The trough feeders are designed for heavy operation and can operate all year round in humid and dusty conditions.
- The trough bottom is lined with exchangeable armoring made of highly wear-resistant material.
- The feeders can be supplied in a shortened version with the drive fitted with the classic gearbox and crank gear (version A) or a hydraulic drive positioned under the trough feeder (version B).

### Trough feeder - version A



### Trough feeder - version B



### Principal parameters

Type	Feeder width	Feeder length	Max. grain size of material	Capacity	Power input
	mm	mm	mm	t/h	kw
ZP 650	650	2500-4000	500	130	5-7
ZP 800	800	3000-4500	650	200	7-10
ZP 1000	1000	3500-5000	800	400	14-16
ZP 1250	1250	4000-5500	1000	585	20-29
ZP 1600	1600	4500-6000	1300	775	31-37
ZP 2000	2000	5000-6500	1600	1050	37-50

The capacity is determined for a material bulk density of 1.6t/m<sup>3</sup> and an inclination of the feeder bottom of 5°.